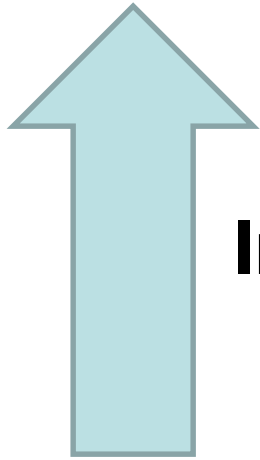


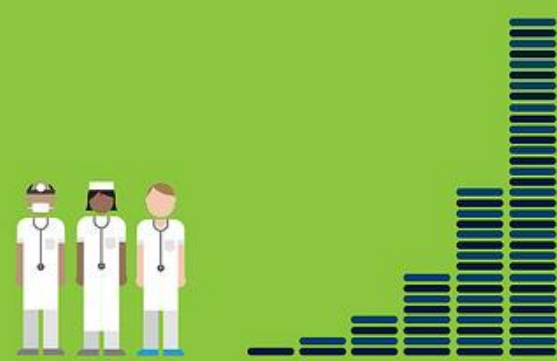
Telepharmacy

Mike Brownlee, PharmD, MS, FASHP
Chief Pharmacy Officer, UI Health Care
Clinical Associate Professor and Associate Dean, UI College of Pharmacy



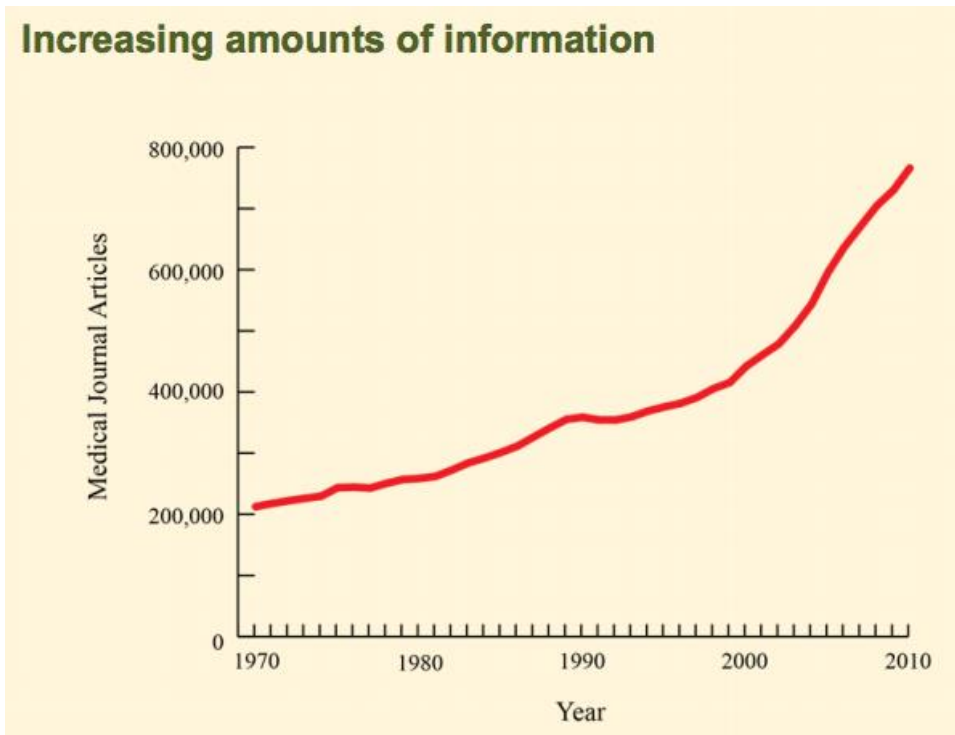
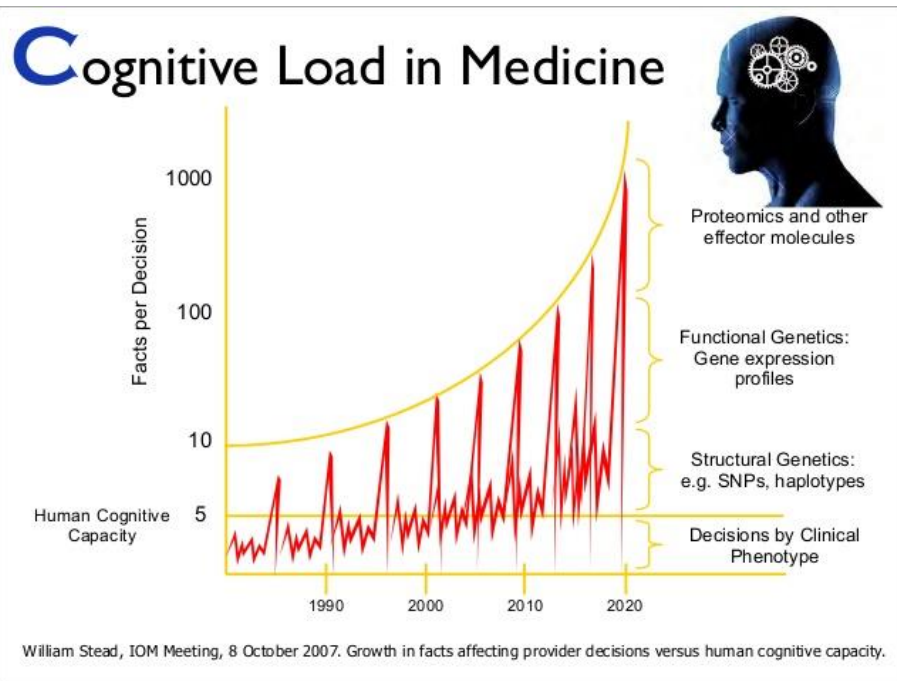
Information and Complexity

Medical data is expected to double every 73 days by 2020.

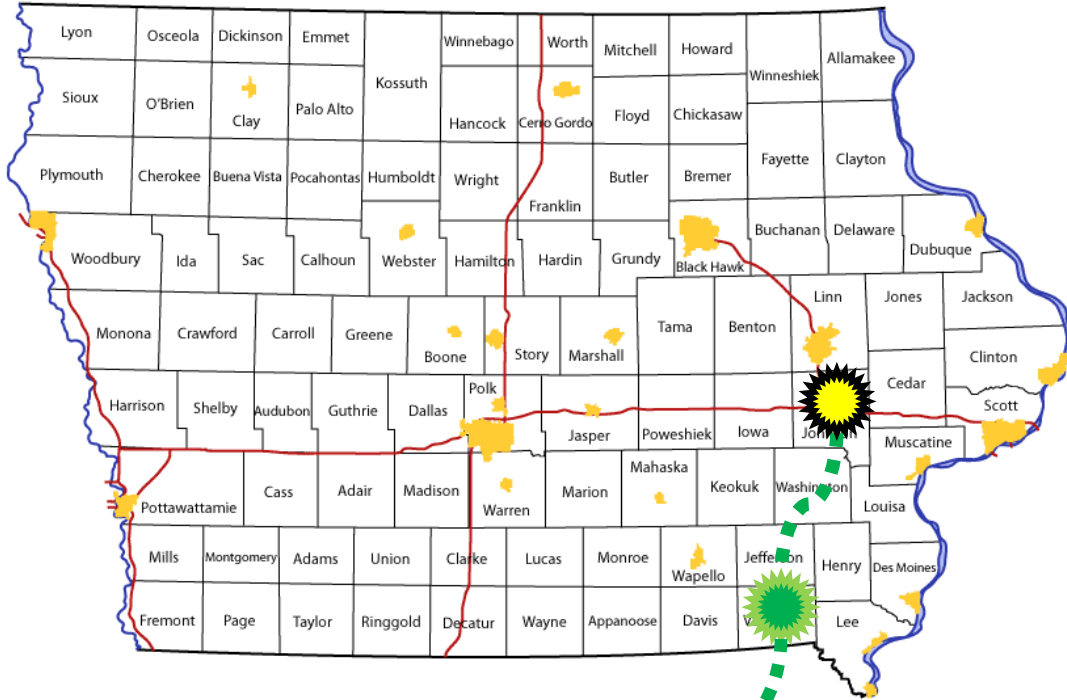


IBM Watson Health

Source: University of Iowa, Carver College of Medicine, 2014



TEAM APPROACH



Epic

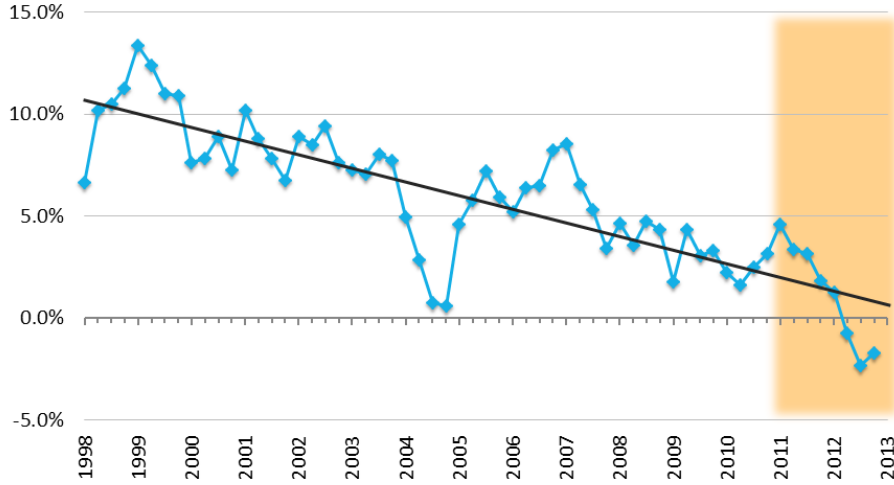
tp TELEPHARM

UIHC + Van Buren County Hospital

- Hybrid model with onsite pharmacist 50% and remote verification
- Partner with physicians (Hospitalist program)
- Improved quality
- Saved on equipment contracts
- Improved compliance with BOP and DEA
- Kept resources and care in Keosauqua

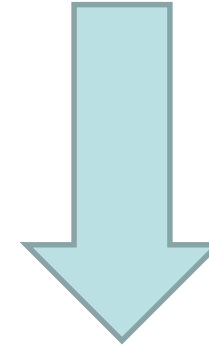
Pharmacy Growth Slowdown

Pharmacies and Drugstores (NAICS 44611),
Year-over-Year Change in Quarterly Revenues

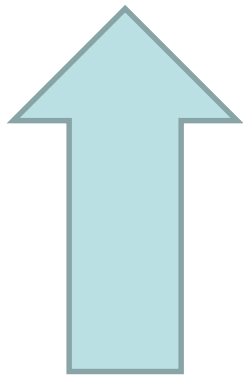


Source: Pembroke Consulting analysis of Bureau of Census data. Data are not seasonally adjusted.

Published on Drug Channels (<http://www.DrugChannels.net>) on March 7, 2013.

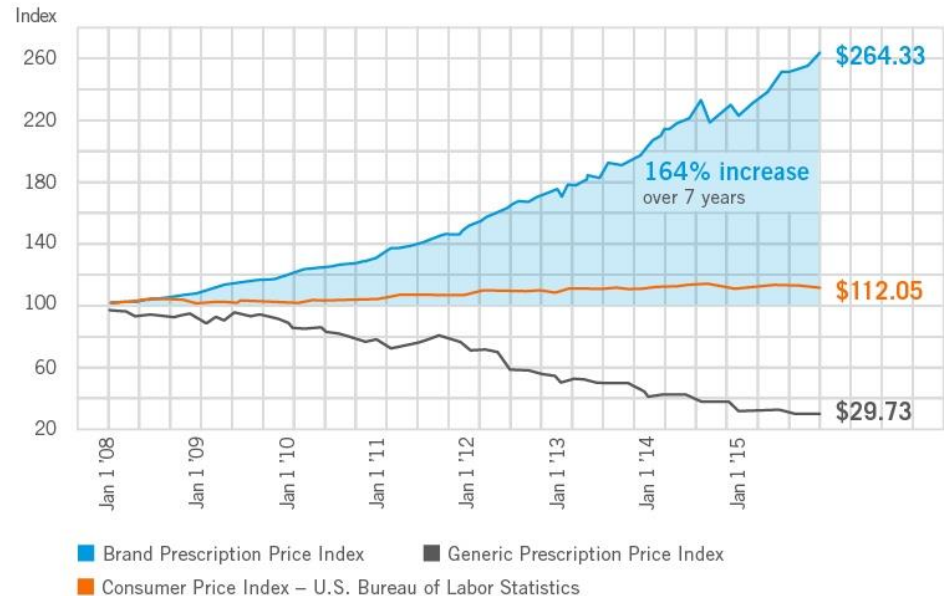


Declining Revenue



Increasing Drug Cost

EXPRESS SCRIPTS PRESCRIPTION PRICE INDEX



NEW MODELS

- Improved access
- Enhanced care
- Keep cost low
- New types of jobs



Connect to the Experts



CARE TO PATIENTS



- Community Oncology - Quad Cities HO
- No pharmacist onsite – physician practice
- Improved safety for staff
- Improved clinical care for patients

Benefits and Barriers



- Team approach
- Improved quality of systems
- Expand reach of experts
- Care TO our patients
- Teaching the future to students



- Qualified staff (technicians especially)
- Prohibitive rules
- Bandwidth/IT support
- Reimbursement

THANK YOU!